

## 2. BIOLOGICAL CLASSIFICATION

$(1 \times 2) + (1 \times 4) = 6$  Marks

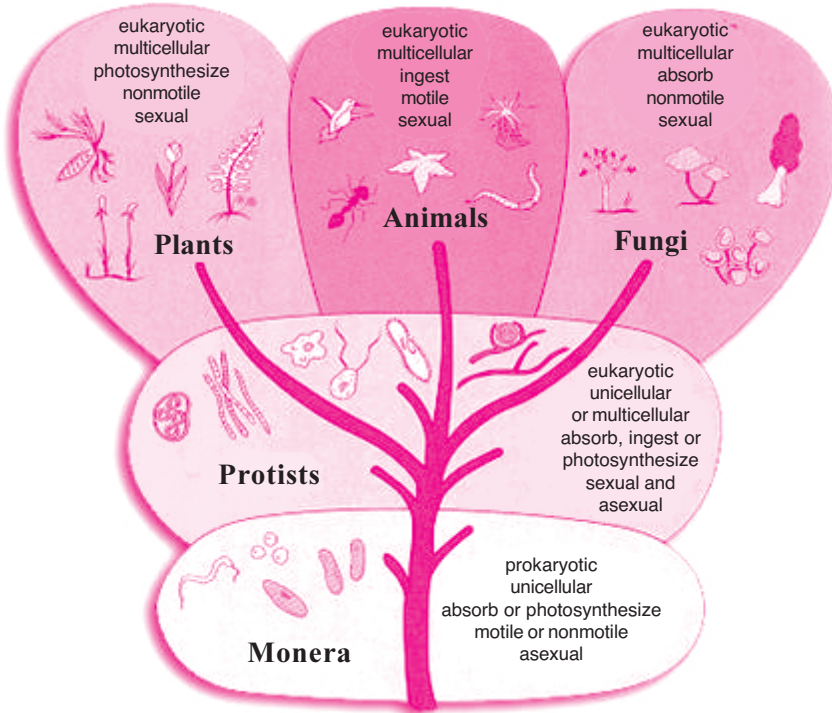
### ROOT POINTS

1. **Biological classification** is the arrangement of organisms into groups on the basis of their similarities and dissimilarities and placing the groups in a hierarchy of categories.
2. **Categories of Groups:** Species, Genus, Family, Order, Class, Phylum, Kingdom.
3. **Linnaeus' two kingdom system:** Plantae and Animalia.
4. **Whittaker's five kingdom classification:** Monera, Protista, Fungi, Plantae and Animalia.
5. **Main criteria of five kingdom classification:** Cell structure, thallus organisation, mode of nutrition, reproduction and phylogenetic relations.
6. **Carl Woese's six kingdom classification:** Bacteria, Archaeobacteria, Protista, Fungi, Plantae and Animalia.
7. **Viroids** are infectious agents to plants whereas **viruses** are infectious agents to all organisms.
8. The **algal** component of lichen is called **phycobiont**. [IPE]
9. The **fungal** component of lichen is called **mycobiont**. [IPE]
10. **Euglenoids** belong to kingdom protista. They are a group of unicellular flagellate eukaryotes. [IPE]
11. **Dinoflagellates** belong to **Kingdom protista**. They are a group of flagellate eukaryotes. [IPE]
12. **Chrysophytes** belong to **Kingdom Plantae**. They are a group of **algae**. [IPE]

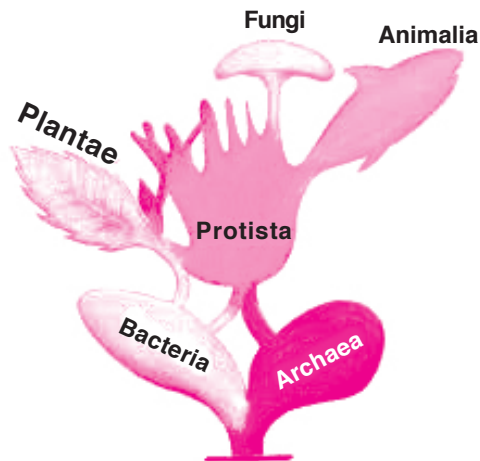
### FRUITY Qs OF IPE

$(1 \times 2) + (1 \times 4) = 6$  Marks

1. How are 'Viroids' different from 'Viruses'?
2. What do the terms phycobiont and mycobiont signify?
3. State two economically important uses of heterotrophic bacteria.
4. What is the principle underlying the use of cyanobacteria in agricultural fields for crop improvement?
5. Give the main criteria used for classification by Whittaker.
6. Name two diseases caused by Mycoplasmas.
7. What are the characteristic features of Euglenoids?
8. Give the salient features and importance of Chrysophytes.
9. Give a brief account of Dinoflagellates.
10. Write the role of Fungi in our daily life.



**Five Kingdom Classification**



**Six Kingdom Classification**

**BULLET MASTER'S  
BOT BEATS!**

Every one has some enthusiasm to know about the roots of their own family tree.

That is father, grand father, fore grand father.....

In the similar way, we should learn the sequence or the evolution of existing and even the extinct species in this world by knowing their **BIOLOGICAL CLASSIFICATION**